

# SCHEDULER

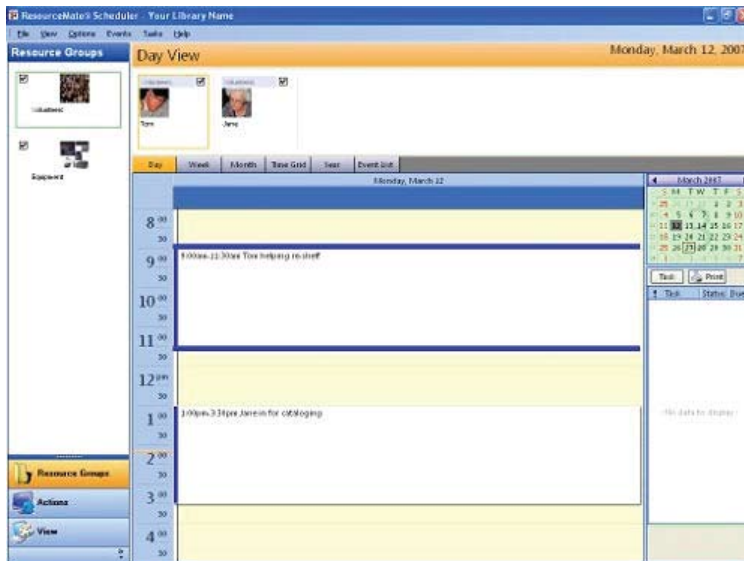
## A ResourceMate® Add-on Module

The Scheduler Add-on Module for ResourceMate® is a fantastic utility for helping with the auxiliary tasks that many librarians are charged with, such as:

- Scheduling when your volunteers will be in, and
- Tracking when A/V or other reservable items are scheduled to be out of the library.

The Scheduler module is available now for just \$99.

Scheduler is a planning tool that allows you to schedule resources (think of them as a person or thing that needs to be scheduled like a volunteer or a particular piece of equipment). A great feature with Scheduler is that you can add an image to a resource's records so you can better see what type of resource you're dealing with.



The schedule is made up of events (which are basically the dates/times when a resource is in use), which becomes your calendar of events. You can then view this in many different ways: daily, weekly, monthly or yearly. You can also print this to keep a hard copy in your library.

The Scheduler Add-on Module gives you the features of a full planning software right in your ResourceMate® program! Scheduler is only **\$99**. To learn more feel free to download a demo of our software at [www.resourcebate.com](http://www.resourcebate.com) or contact a representative at [sales@resourcebate.com](mailto:sales@resourcebate.com) or call 1-800-815-8370!



## What if...

*... I wanted to create a schedule for when my volunteers or associates were working in the library?*

*... I need a tool to help me manage when my A/V equipment and other reservable items are out and who has them?*

*... I would like to make up a calendar that shows my schedule?*

## You can!

**With the ResourceMate® Scheduler Add-on Module for just \$99**