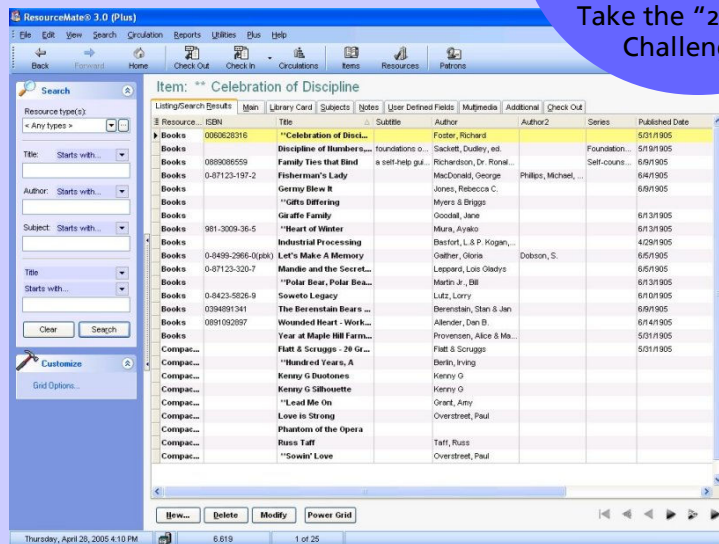


# Jaywil's Guide To Choosing ResourceMate® in your Library

# Free

Demos Available @  
[www.resource-mate.com](http://www.resource-mate.com)  
Take the "2-Minute  
Challenge"!



## ResourceMate® 3.0

Choosing to automate your library is a big decision, and at Jaywil we understand that the transition can be overwhelming at times.

Why is automating better than what I'm doing now?

How does automation fit in with the procedures I have in place now?

Which products do I pick?

There are plenty more questions that you've probably been asking yourself. But you should know that the decision to automate your library will be one that will reap rewards for you and your patrons for years. Automating does take some work at the beginning, but after the initial investment the payoff is tremendous!



# Choosing ResourceMate® in your Library

There are **6** easy steps in deciding which ResourceMate® products are right for you...

- 1. Do you want to use ResourceMate® as an inventory program and a card and label printer?**  
That's great! **ResourceMate® 3.0 Regular** will take care of all your needs. You can catalog your entire collection and keep an inventory of it, or you can just catalog items that are new or need new cards or labels. Either way, **ResourceMate® 3.0 Regular** will print any and all of your catalog cards, spine labels, pocket labels, and sign-out card labels.
- 2. Do you want to keep all your items and patrons on a computer and circulate on the computer?**  
Perfect! This is what **ResourceMate® 3.0 Regular** was created to do. Once you install it, you will catalog all the items in your library, and enter in all the patrons that will be using your library. You can also generate reports, let patrons search your collection, check in and out items and keep track of all your circulations – all with one program.
- 3. Do you have a higher volume of circulations and/or a want to use the service of volunteers to help catalog?**  
**ResourceMate® 3.0 Plus** would be a great choice for either of these scenarios. **ResourceMate® 3.0 Plus** does everything that Regular does, plus it also allows users to help the librarians from their home computers and have their work merged into the main computer. With a higher volume of circulations, you may want to consider bar coding. **ResourceMate® 3.0 Plus** allows users to input bar code numbers for all their items and patrons. With the additional purchase of **pre-printed bar code labels** and a **bar code scanner**, you'll be ready to circulate items more efficiently.
- 4. Do you want patrons to be able to search your collection using another computer on the network?**  
With either **ResourceMate® 3.0 Regular or Plus** you can add independent search stations by purchasing our **Patron Search Screens**. These are installed on computers that are separate from your main computer but linked together on a network. They give your patrons the ability to search your collection, while not tying up your main computer.
- 5. Do you want to have multiple librarian computers and/or patron search stations?**  
For slightly larger libraries that wish to have separate stations to do cataloging, check outs and check ins – all happening simultaneously – we recommend adding **ResourceMate® 3.0 Multi** to either their Regular or Plus program. With this you get three licenses to set up three stations on different computers that have been networked together. All these stations have access to your entire ResourceMate® program making distinct task areas for your librarians and volunteers.
- 6. Do you want to get some assistance in cataloging your items?**  
That's not a problem either! Within **ResourceMate® 3.0**, use **ISBN Retrieval** by typing in an ISBN to quickly get cataloging information from the Library of Congress. Also, if you have information in any electronic format, we offer a **Data Conversion** service. And finally, you can use our **EntryMate™** service to convert a list of ISBNs (either created by you, or on a scanner you can rent from us) into ResourceMate® data.

## More questions?

Feel free to contact our customer service by e-mail or call us at our toll free number and one of our Representatives will gladly help you find the products you need:

[info@resourcemate.com](mailto:info@resourcemate.com)  
1-800-815-8370



## Shop Online

[www.resourcemate.com](http://www.resourcemate.com)

Visit our online store for fast and convenient shopping. All our products are available for order, and our ResourceMate® Regular and ResourceMate® Plus are available for immediate download!

**Phone:** (519) 837-8370

**Toll Free:** (800) 815-8370

**Fax:** (519) 837-8656

**E-Mail:** [info@resourcemate.com](mailto:info@resourcemate.com)



Jaywil Software Development Inc.  
P.O. Box 25005  
Guelph, Ontario, Canada  
N1E 1B1